

iBSG – the 30th of May 2012

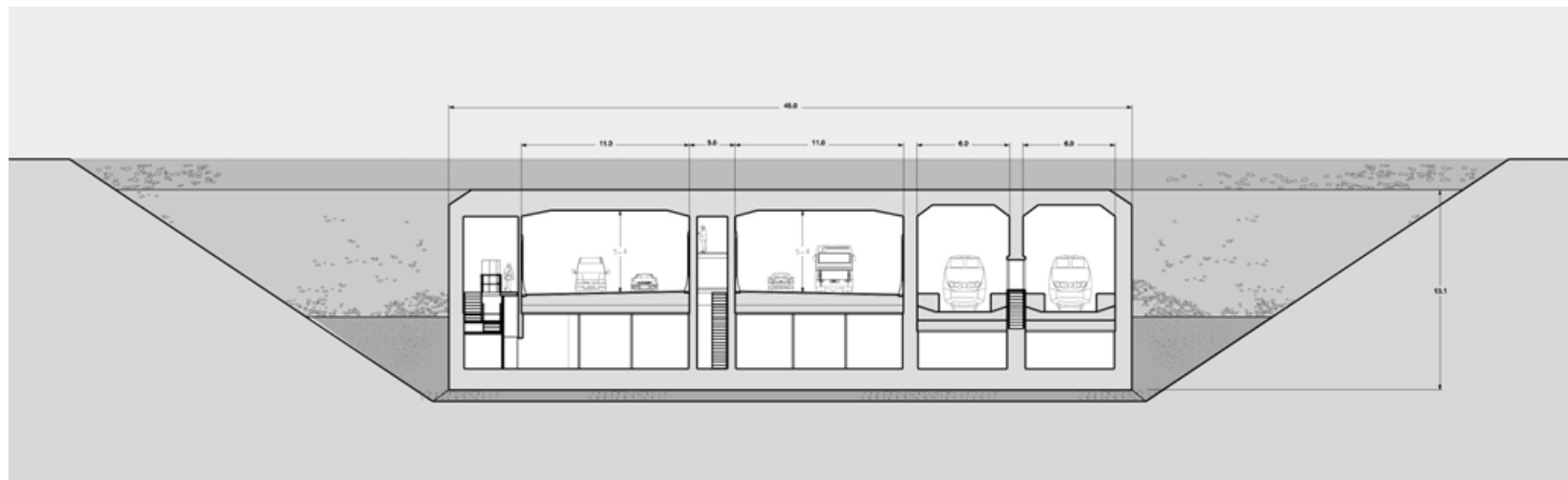
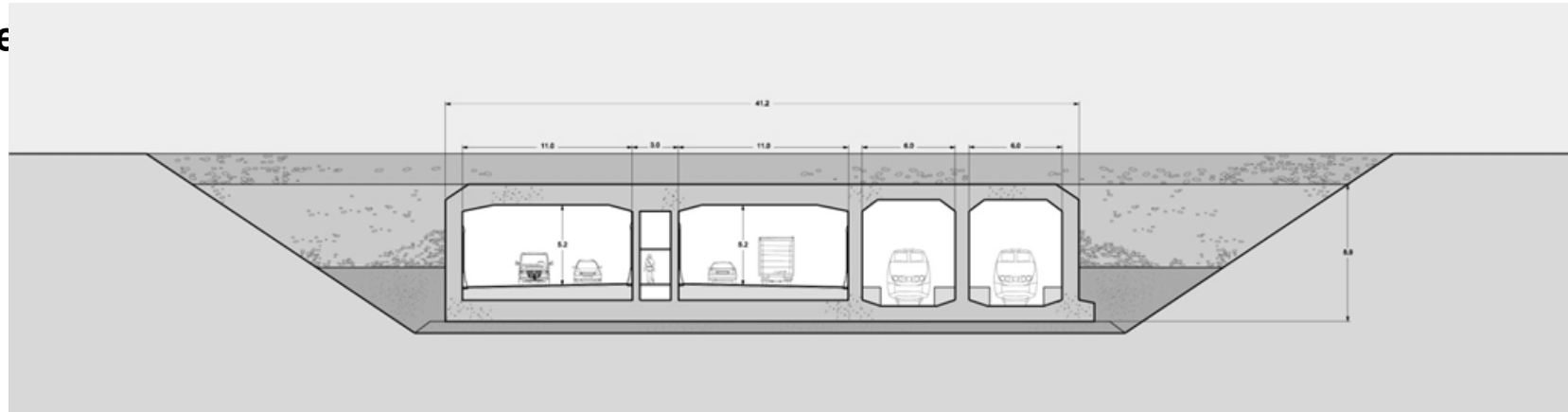


Immersed tunnel



STP I NG
TR I NG
PI NG
NG STP I
NG STP I

Imme





Expansion of the German landworks

- Germany will ensure sufficient capacity on the Bad Schwartau – Puttgarden rail section
- Electrification of the Lübeck-Puttgarden rail section
- The German rail hinterland will be expanded to double track (with the exception of Femern Brücke) no later than 7 years after the opening of the coast-to-coast section
- Expansion of the Heiligenhafen-Puttgarden road to four lanes

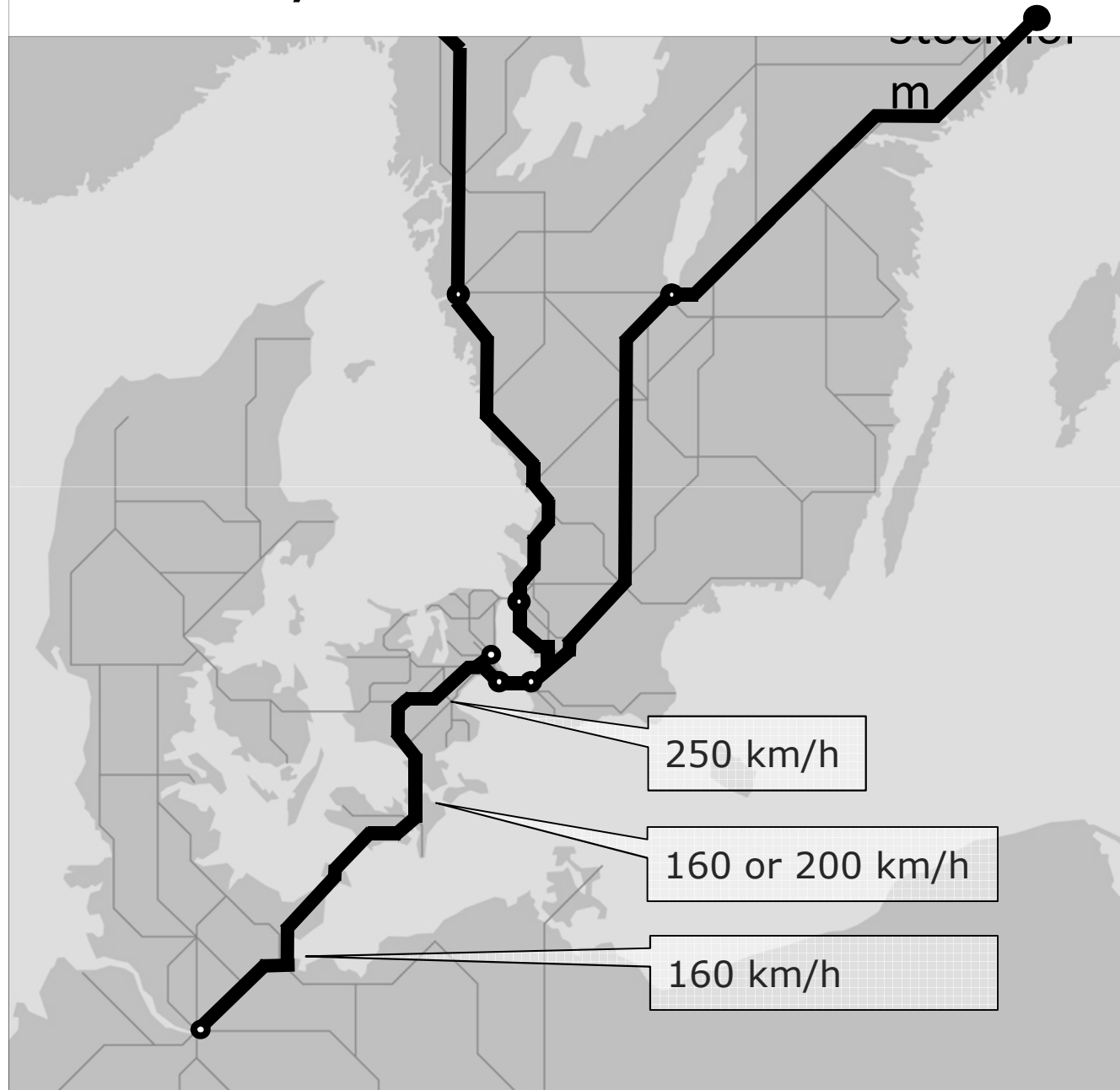


Expansion of the Danish hinterland infrastructure

- Electrification of the Ringsted-Rødby rail section
- The Vordingborg-Rødby rail section will be expanded to double track with the exception of the Storstrøm bridge
- Assessment of necessary upgradings and environmental improvements of the Sakskøbing-Rødby motorway



Railway network



Travel time
Copenhagen-
Hamburg:

4½ hrs today



3 ½ hrs in
2021



2½ hrs
German HL



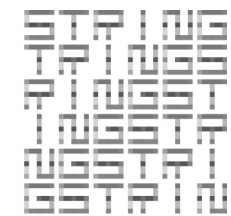
1 ½ -2 hrs
High-Speed

A new region?

STAPLING
STAPLING
STAPLING
STAPLING
STAPLING
STAPLING
STAPLING
STAPLING
STAPLING
STAPLING

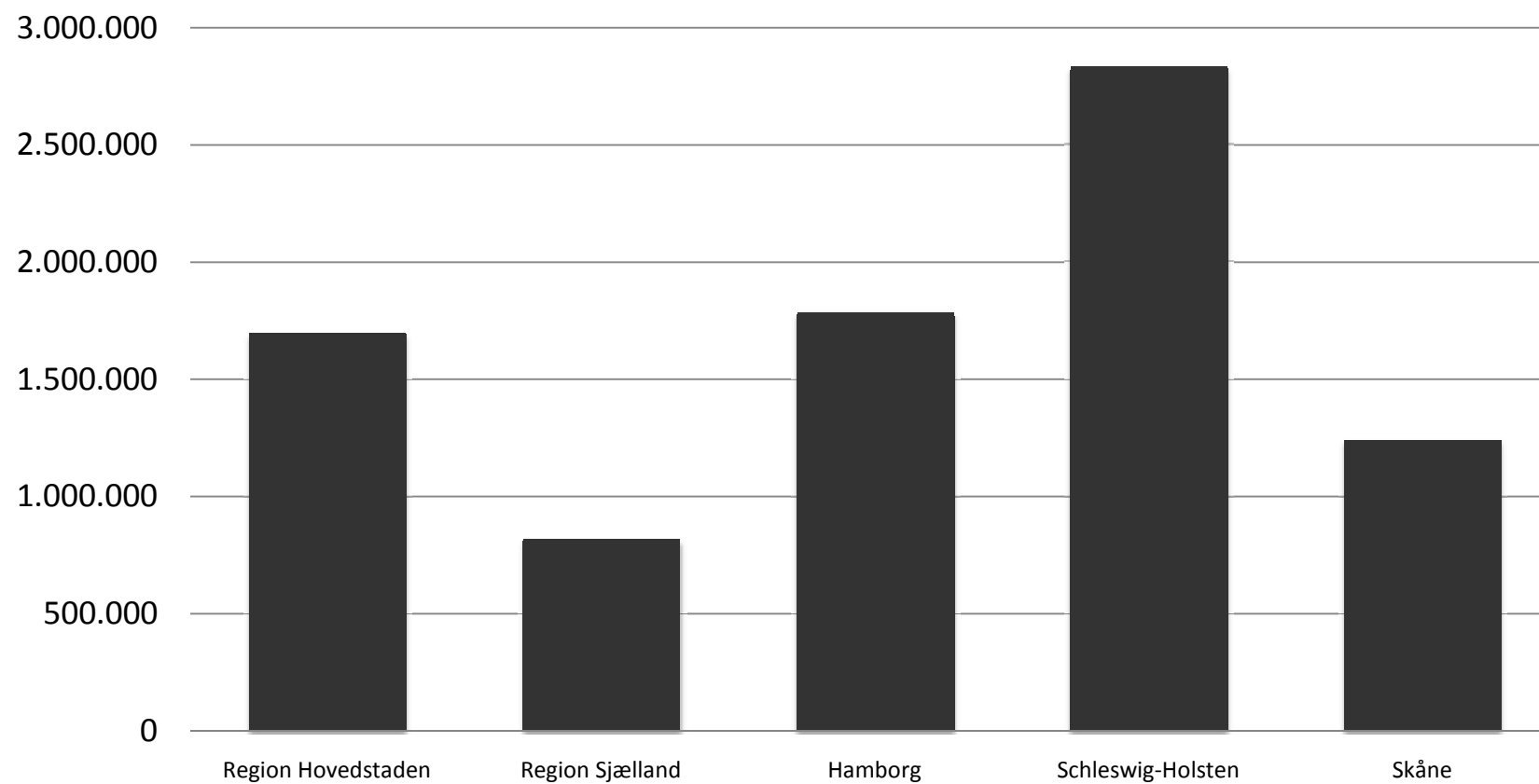
STRING

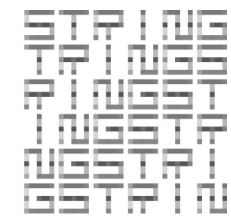




STRING

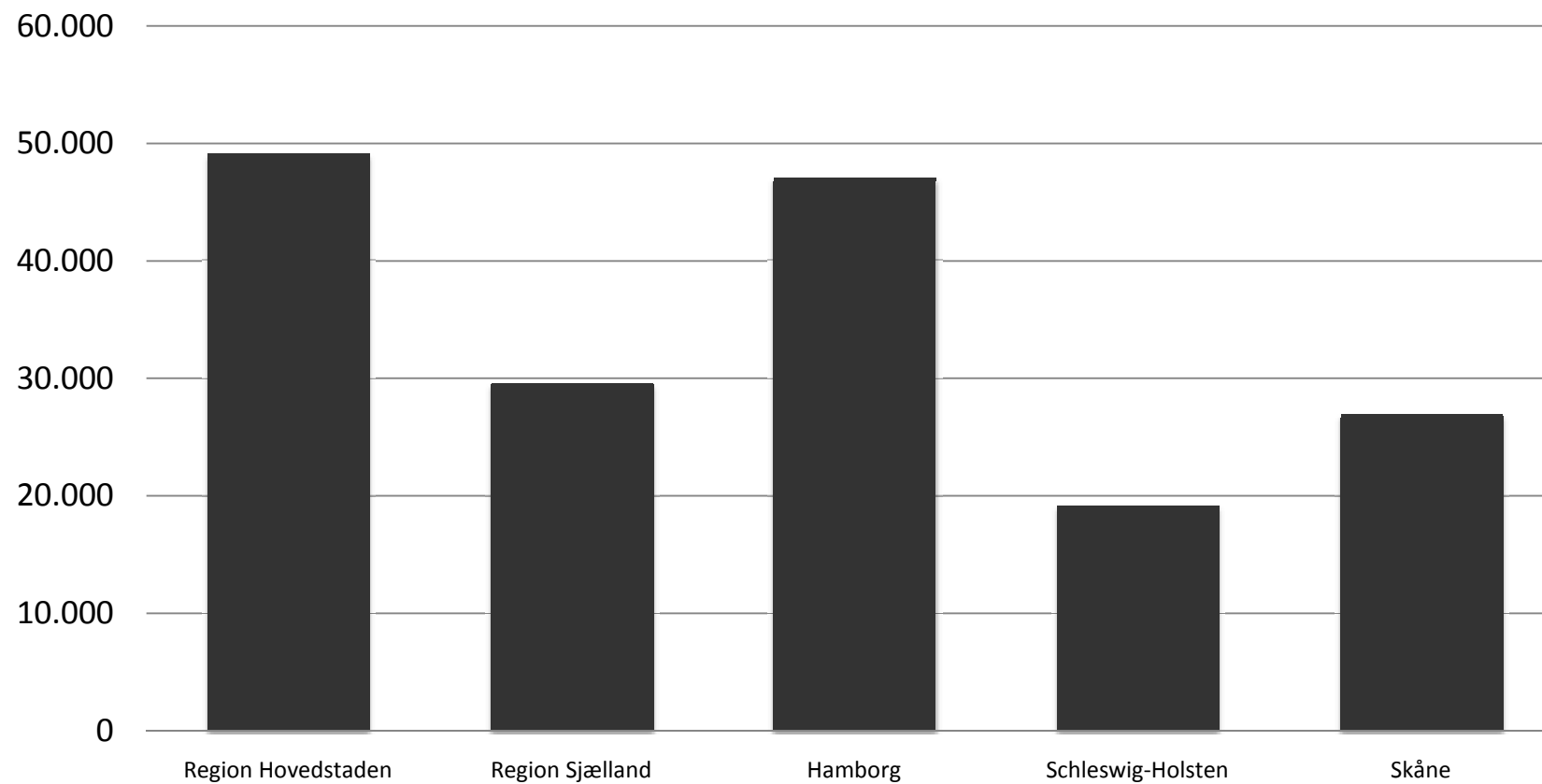
Inhabitants

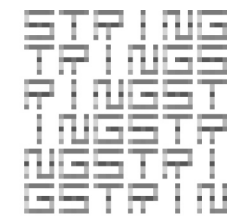




STRING

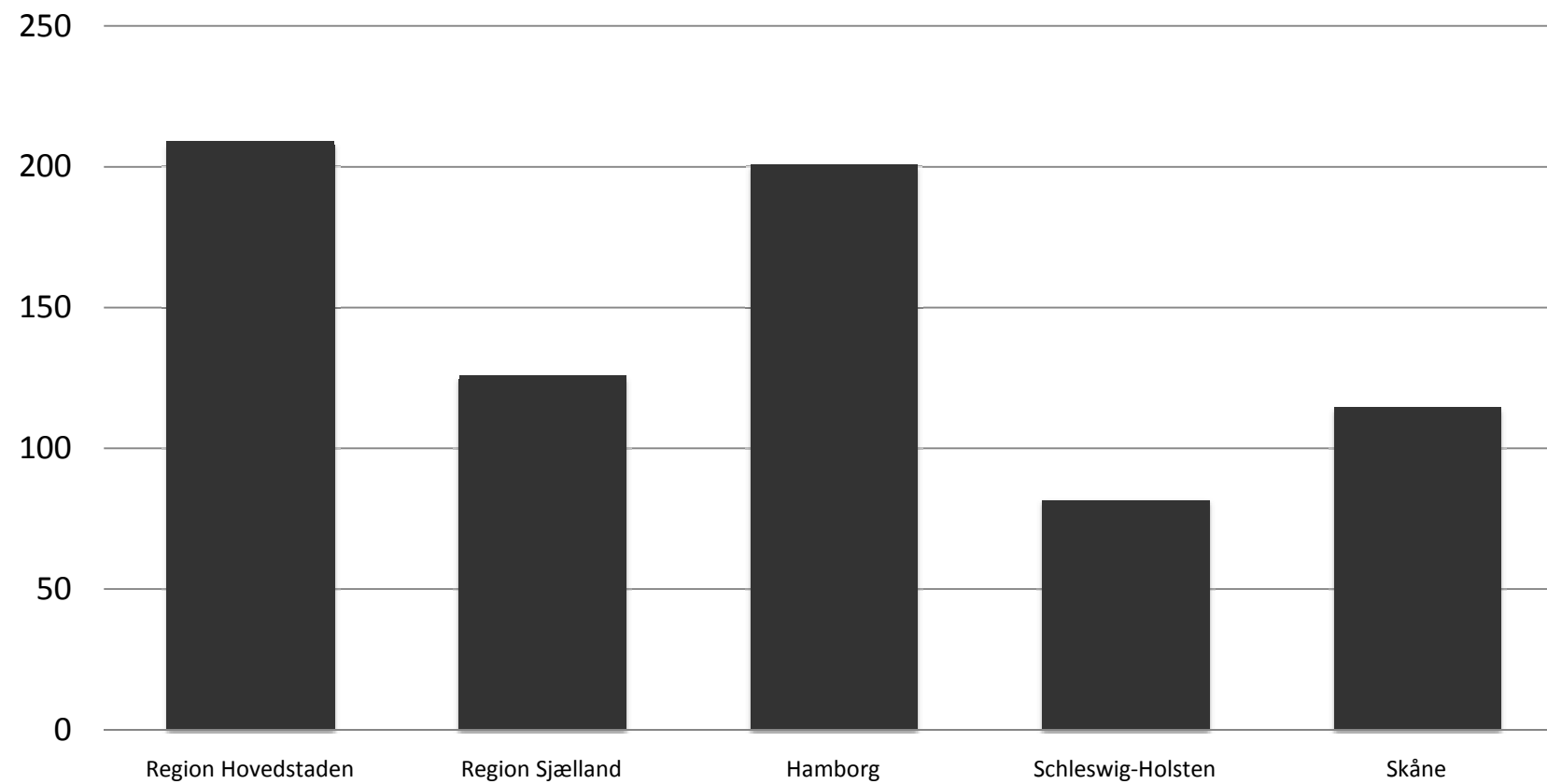
GDP per inhabitant 2009

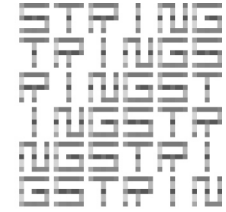




STRING

GDP compared with EU 27





STRING

Creating a region

STRING

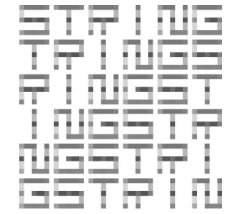
(South Western Baltic Sea Transregional Area Implementing New Geography)

Partners:

Hamburg, Schleswig-Holstein, Region Zealand, Capital region of Denmark, Region Skåne

Lobby organisation established in 1999 to lobby for The Femern Belt Link

Today an organisation that works for green growth and development of the Femern Corridor crossing borders between Sweden, Denmark and Germany

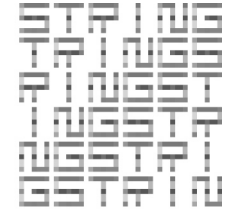


STRING

Creating a region

The Zealand Agreement:

“Our vision is that the STRING region will be the driver behind a North European green growth corridor consisting of the STRING region in a functional partnership with our neighboring regions. The corridor will be a green European powerhouse; a strong strategic axis contributing to knowledge, growth, welfare and sustainability in Northern Europe, including the Baltic Sea Region.”



STRING

Our Priorities

- Infrastructure – to ensure the best possible quality in the corridor between Hamburg and The Øresund Region
- Science and research – to facilitate meetings, contacts and cooperation between researchers, universities, businesses and public interests – an “tell the story” about the competences in the region
- Green Growth – establish strategies that support sustainability and economic growth
- Tourism and culture – “Building Tourism” project and networking
- Barriers for cross border activities

Jacob Vestergaard

Email: jves@regionsjaelland.dk

THANK YOU FOR YOUR ATTENTION

